

DUNPHY

DUNPHY COMBUSTION LTD.

Queensway
Rochdale
England
OL11 2SL



+44 (0) 1706 649217



+44 (0) 1706 655512



www.dunphy.co.uk

DATA SHEET

Model: TH5

Revision Date: November 2004

Output: 1250 – 9800 kW

Revision Number: DS.TH5.08



- ◆ All `TH` series burners are manufactured in accordance with BS EN 267.

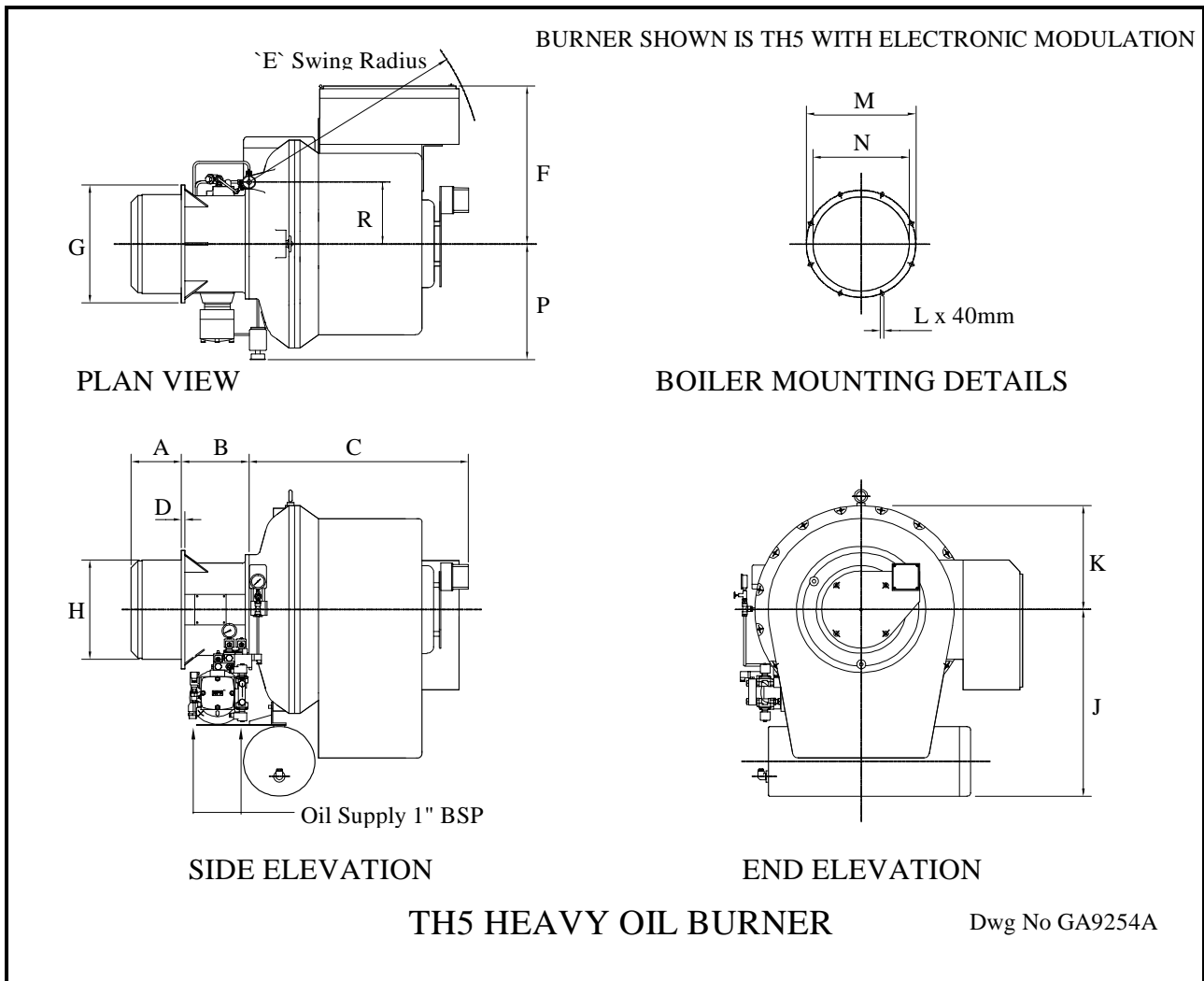


CE



Certificate No. FM 24868
BS EN ISO 9001 : 2000

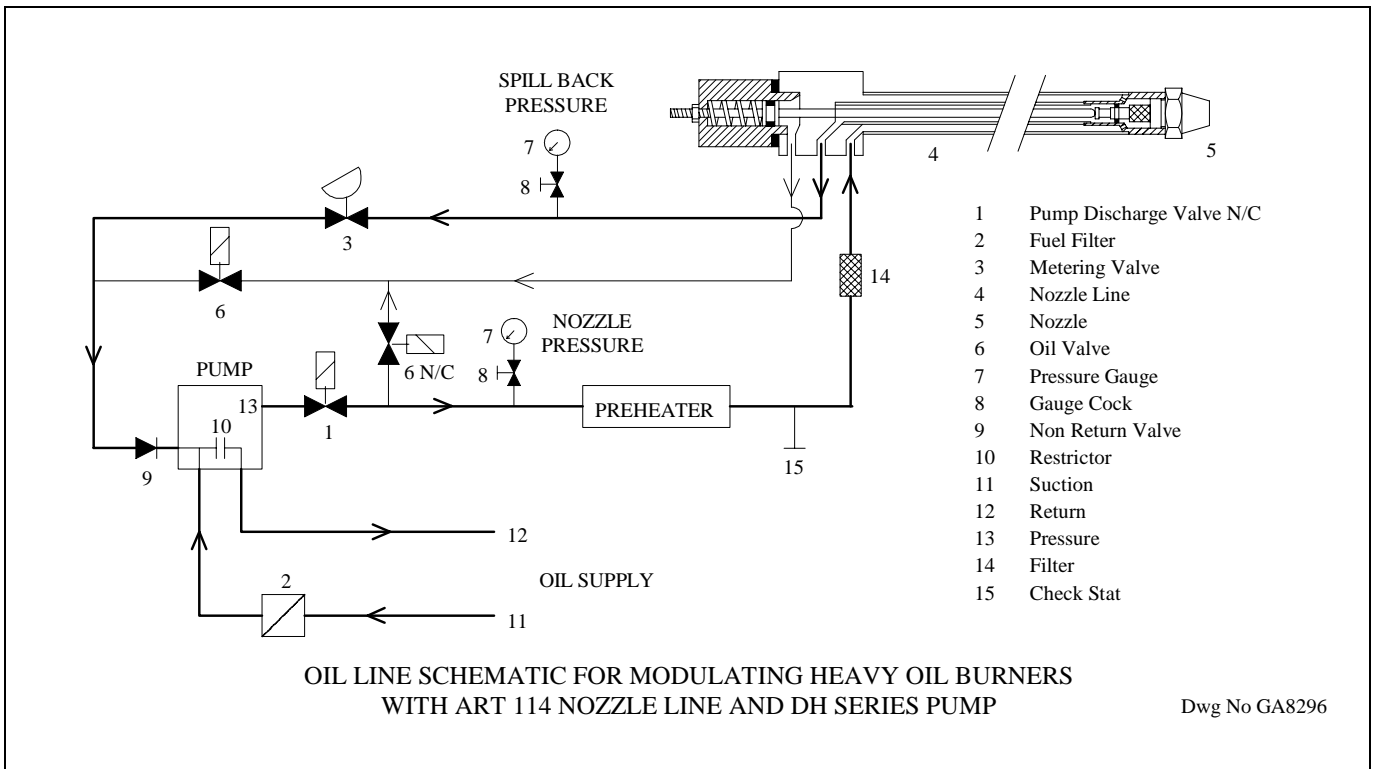
BURNER DIMENSIONS



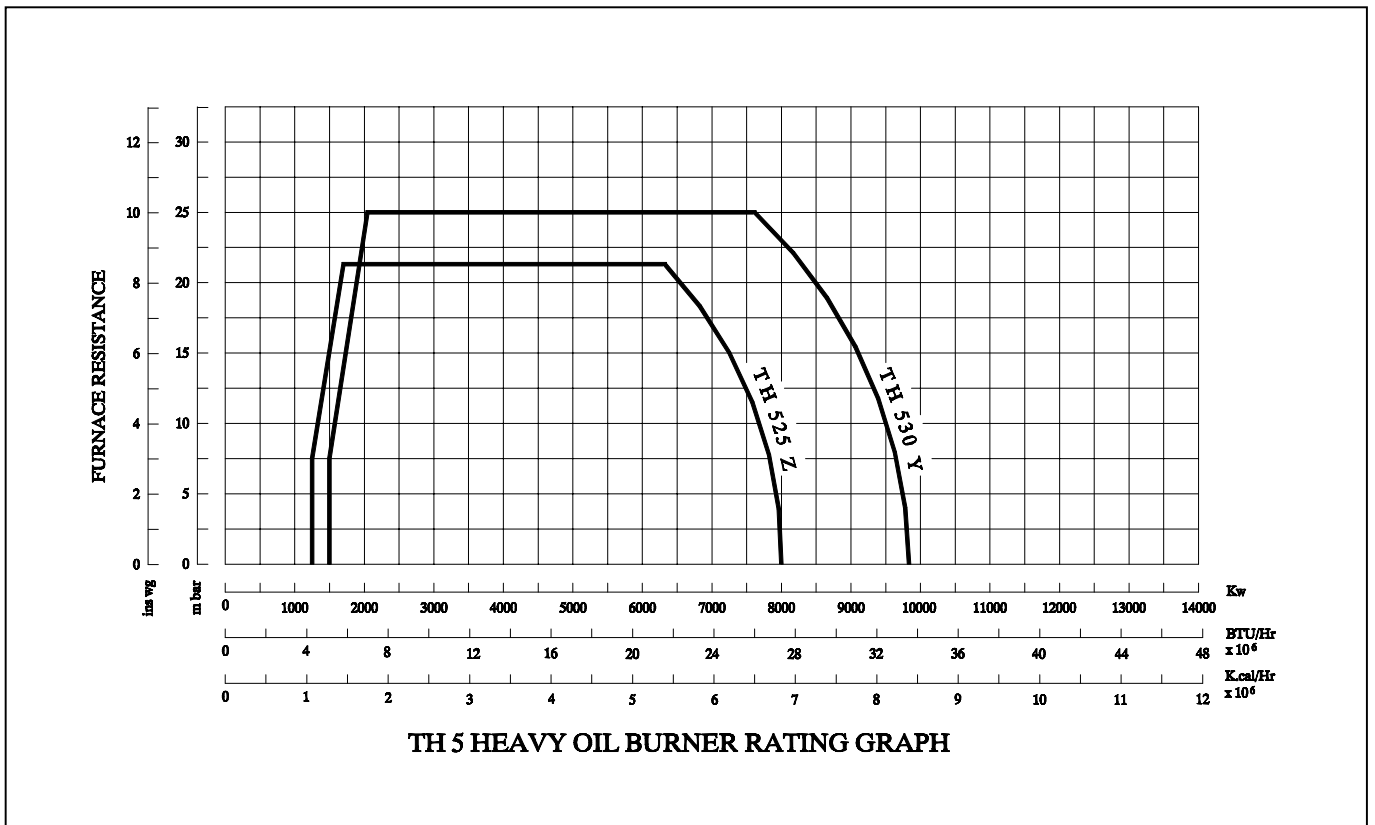
	A min	B	C	D	E	F	G	H	J	K	L	M	N	P	R
TH525Z	230	360	1018	18	1060	730	546	406	863	480	M16	495	413	574	286
TH530Y	230	360	1018	18	1060	730	546	458	863	480	M16	495	470	574	286

- ◆ All dimensions in mm unless otherwise stated.
- ◆ Dimension 'A' is the minimum standard dimension and can be varied to suit application, requirements should be stated when unit is ordered.
- ◆ Dimension 'E' is the average swing radius; this can vary on non-standard burners.
- ◆ Burner shown is right-hand hinge; left-hand hinge is an available option.
- ◆ Please check the issue number to ensure validity.

BURNER RATING GRAPH & SCHEMATICS



Dwg No GA8296



STANDARD SPECIFICATION DATA

BURNER TYPE	Firing Rate kW		FIRING MODE OPTIONS		Fan Motor kW	Heater kW	Pump Motor kW	Voltage	Hz	Ph	Running Current	Starting Current	Weight
	MIN	MAX	Mechanical Modulation	Electronic Modulation*									
TH525Z	1250	8000	✓	✓	18.5	36	4.0	380-420	50	3	97 A	179.7 A	750
TH530Y	1500	9800	✓	✓	22.0	36	4.0	380-420	50	3	103 A	194.1 A	750

* Fitted with a Ratiotronic 3000 system

Dunphy Combustion Ltd. has a policy of continuous development and reserve the right to change prices and specifications without prior notice